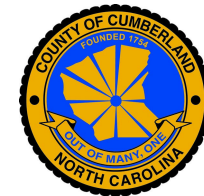
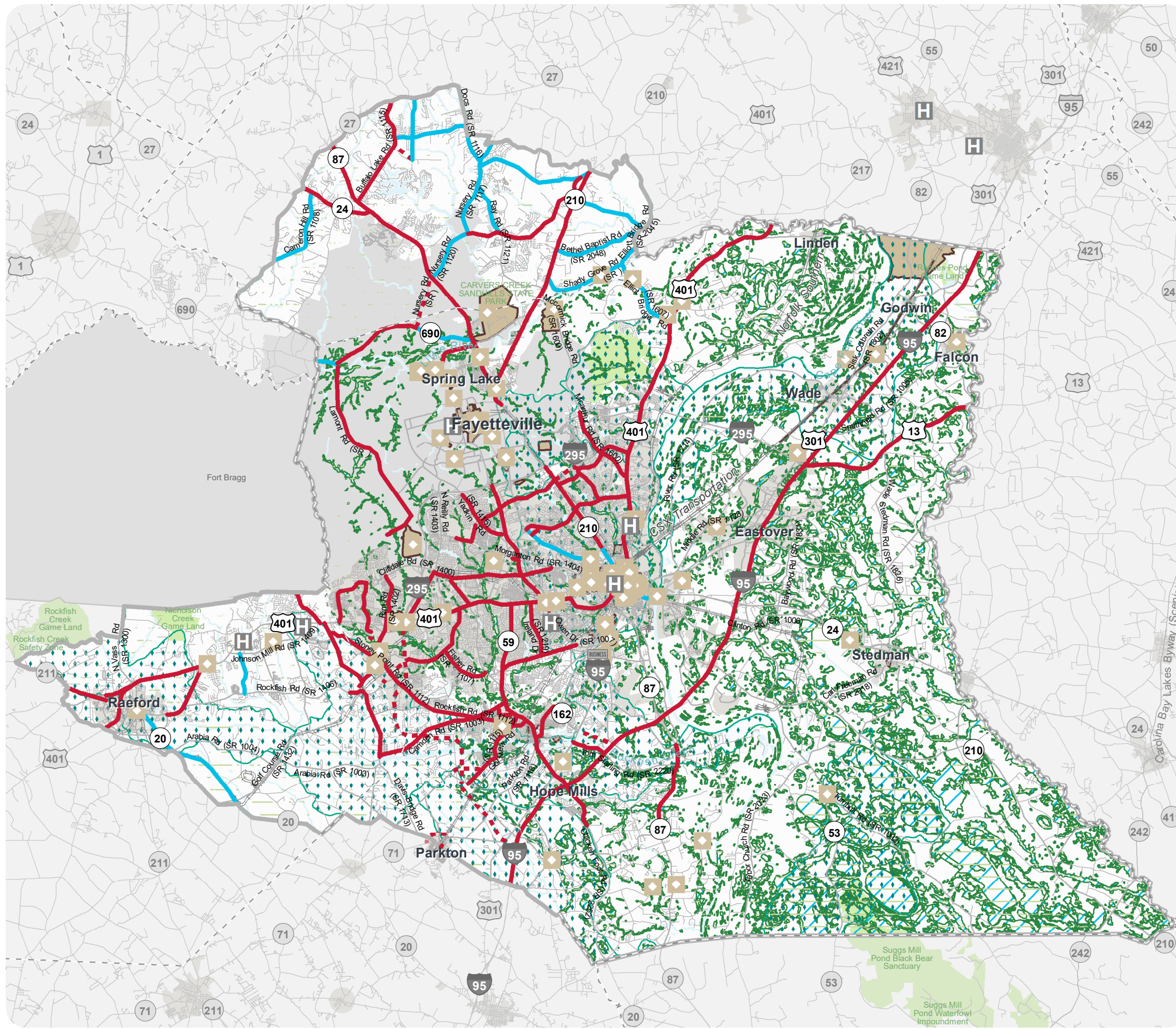


Figure 7
ENVIRONMENTAL FEATURES



**FAMPO & CUMBERLAND COUNTY
 CTP Analysis and Information**

Primary Environmental Features Legend

- Hospital
- Historic Resources - National Register and Determined Eligible (Point)
- Targeted Local Watersheds - EEP
- Historic Resources - National Register and Determined Eligible (Polygon)
- National Wetlands Inventory (NW1)
- NC CREWS



Full report at:
[Tinyurl.com/FAMPOCTP](https://tinyurl.com/FAMPOCTP)



Sheet 1.1 of 3

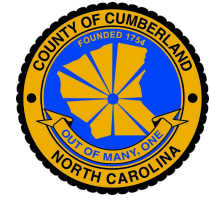
Base map date: November 07, 2019

Legal Disclaimer

This product contains mapping data for informational and planning purposes only, and is subject to change. Users should review or consult the primary data sources to ascertain the usability of the information.



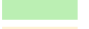
DRAFT
 Plan Date: April 21, 2021

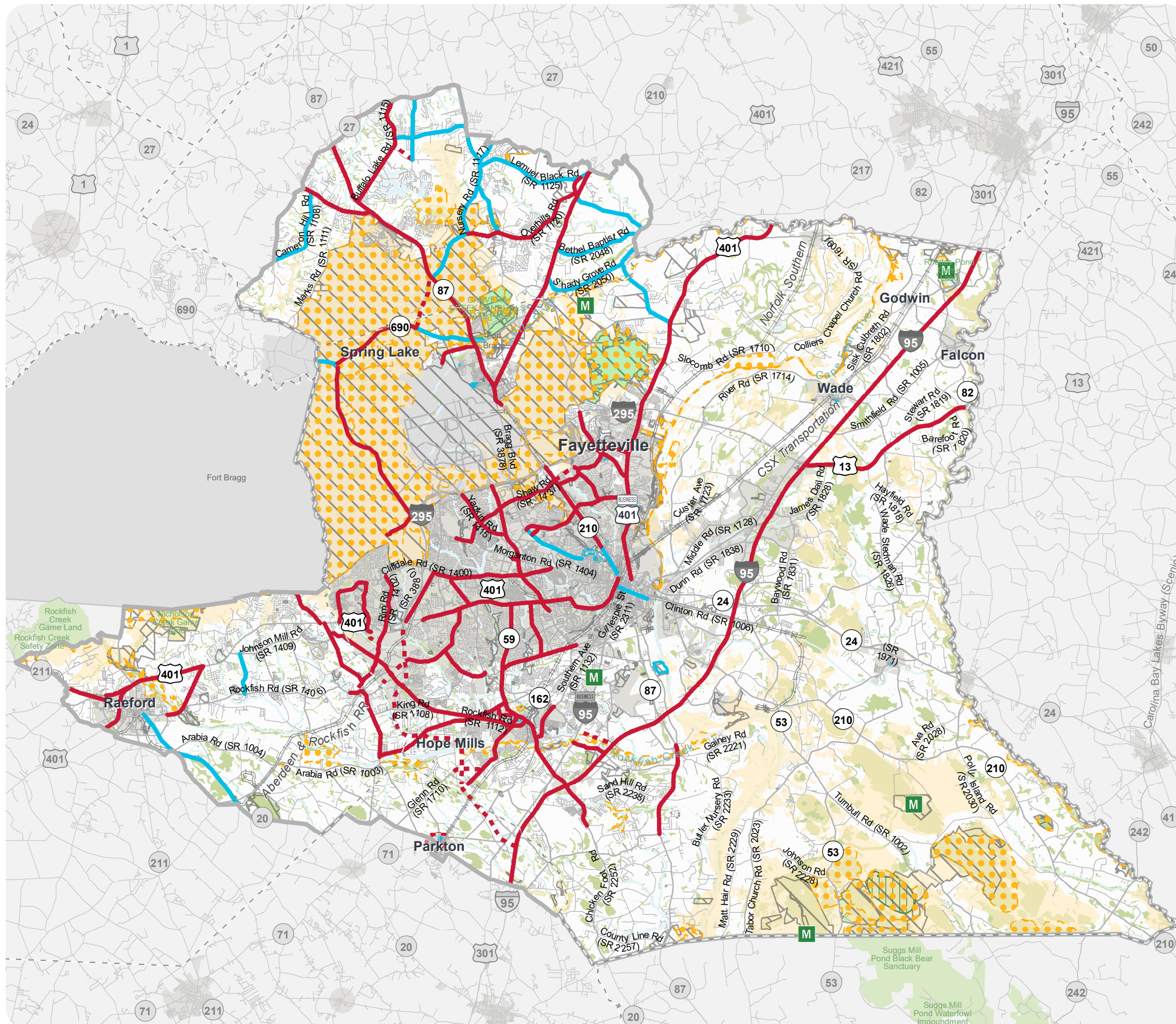
Figure 7
ENVIRONMENTAL FEATURES



FAMPO & CUMBERLAND COUNTY
 CTP Analysis and Information

Primary Environmental Features Legend

-  Mitigation Site - NCDOT Maintained
-  Land and Water Conservation Fund (Recreation Projects)
-  Natural Heritage Natural Areas
-  Unique Wetlands
-  Managed Areas
-  Parks and Recreation
-  Landscape Habitat Indicator Guilds



Full report at:
[Tinyurl.com/FAMPOCTP](https://tinyurl.com/FAMPOCTP)



Sheet 1.2 of 3

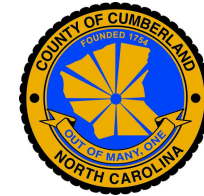
Base map date: November 07, 2019

Legal Disclaimer

This product contains mapping data for informational and planning purposes only, and is subject to change. Users should review or consult the primary data sources to ascertain the usability of the information.

DRAFT
 Plan Date: April 21, 2021

Figure 7
ENVIRONMENTAL FEATURES



**FAMPO & CUMBERLAND COUNTY
 CTP Analysis and Information**

Primary Environmental Features Legend

- School - Colleges & Universities
- 24K Hydro
- Streams and Rivers
- Airport Boundaries
- Flood Hazard Area
- Biodiversity Wildlife Habitat Assessment**
- 9 - 10 (Maximum)
- 8
- 7
- 6
- 5
- 2 - 4
- 1 (Moderate)
- 0 (Unrated)
- Impervious Surface > 20%



Full report at:
[Tinyurl.com/FAMPOCTP](https://tinyurl.com/FAMPOCTP)



0 1 2 4 6 8
 Miles

Sheet 1.3 of 3

Base map date: November 07, 2019

Legal Disclaimer

This product contains mapping data for informational and planning purposes only, and is subject to change. Users should review or consult the primary data sources to ascertain the usability of the information.

DRAFT
 Plan Date: April 21, 2021

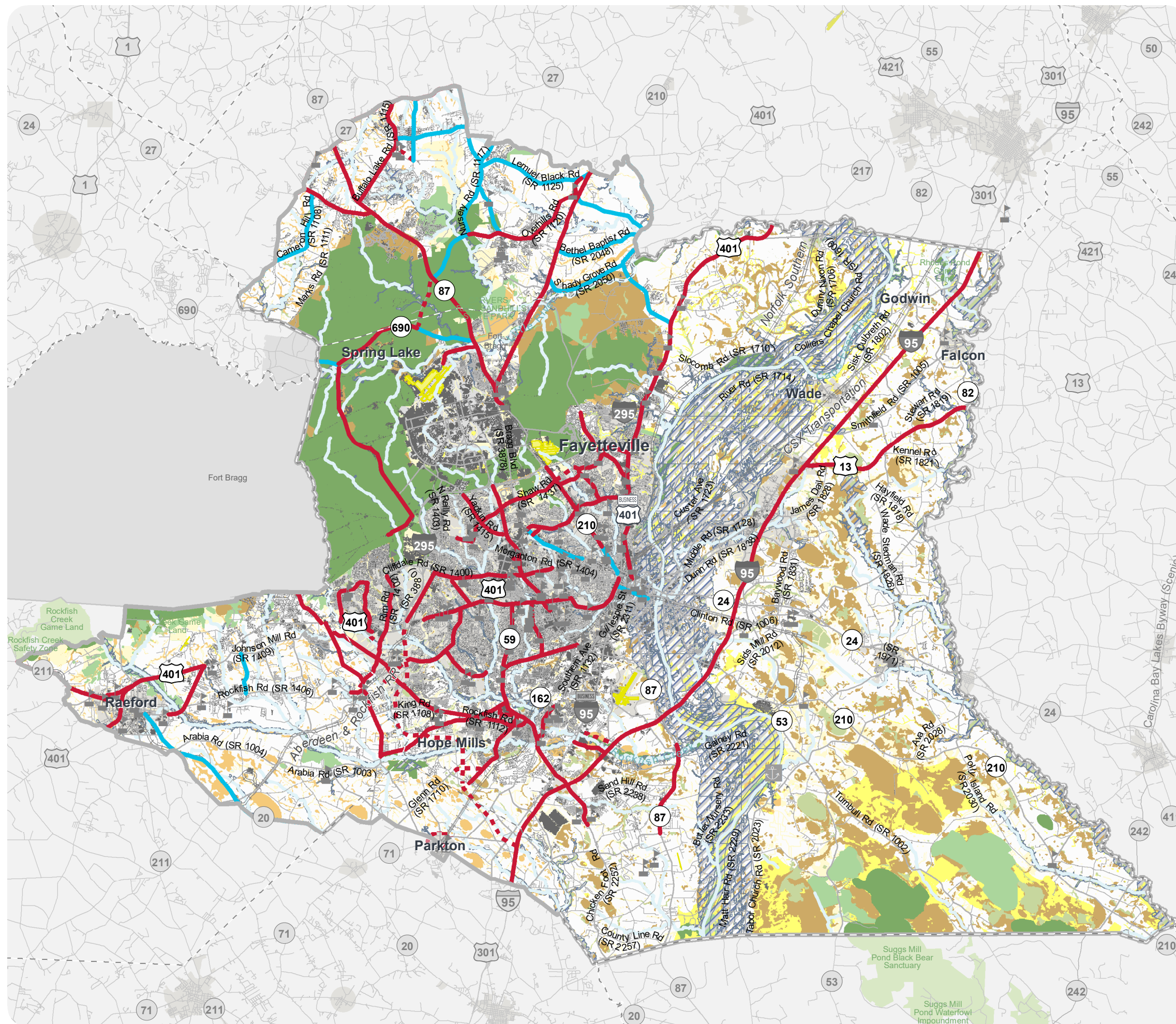
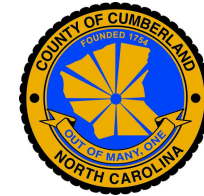


Figure 7
ENVIRONMENTAL FEATURES



**FAMPO & CUMBERLAND COUNTY
 CTP Analysis and Information**

Environmental Features Legend

- Hazard Substance Disposal Site
- Hazardous Waste Facility
- Sanitary Sewer System - Treatment Plant
- Water Tanks
- Water Distribution System - Treatment Plant
- Water System Pumps
- Impaired Streams
- Hazard Substance Disposal Area
- High Quality Waters and Outstanding Resource Water Management
- Water Supply Watershed
- Colonial Waterbird Nesting Sites



Full report at:
[Tinyurl.com/FAMPOCTP](https://tinyurl.com/FAMPOCTP)



Sheet 2.1 of 3

Base map date: November 07, 2019

Legal Disclaimer

This product contains mapping data for informational and planning purposes only, and is subject to change. Users should review or consult the primary data sources to ascertain the usability of the information.

DRAFT
 Plan Date: April 21, 2021

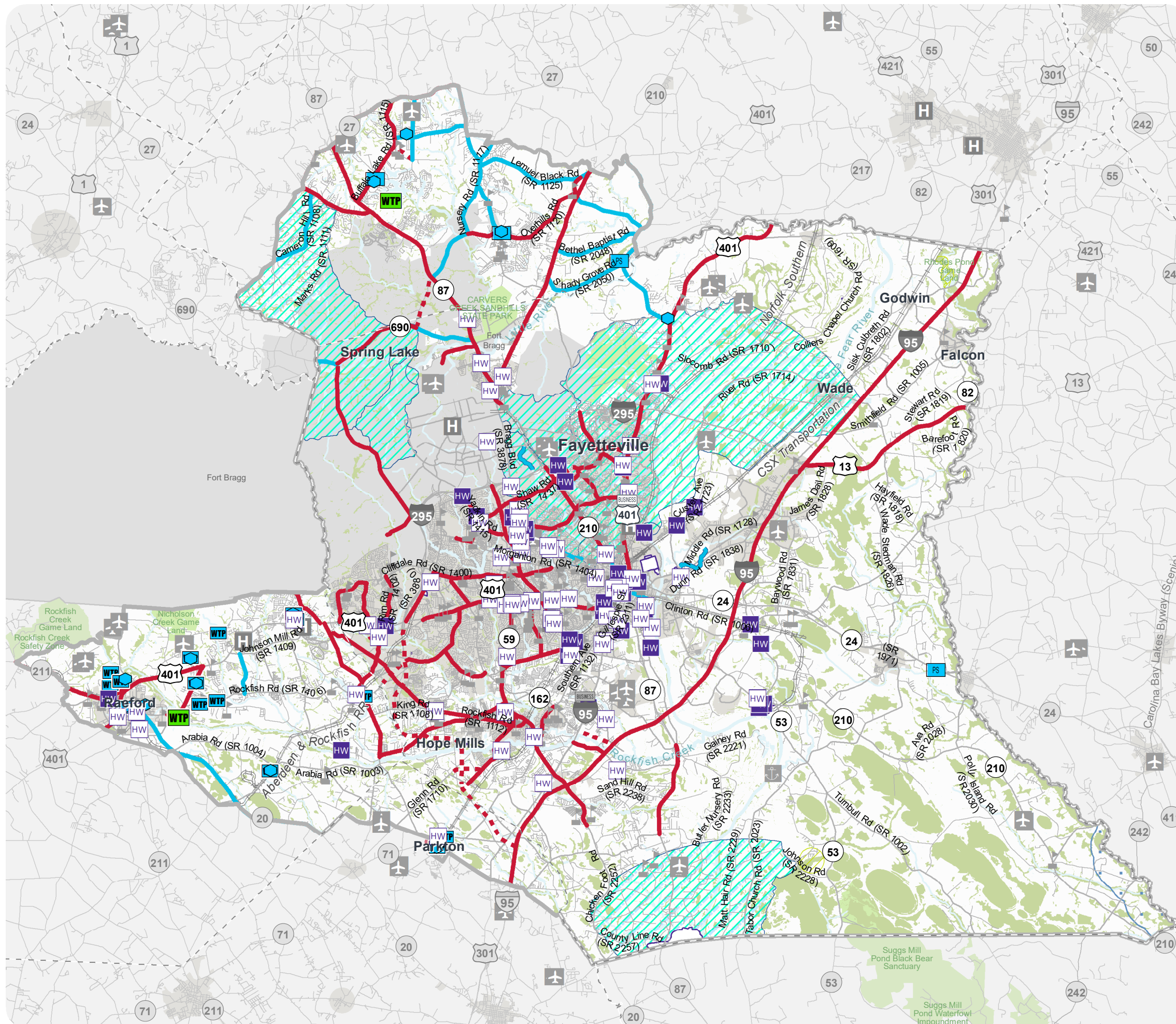
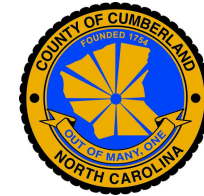







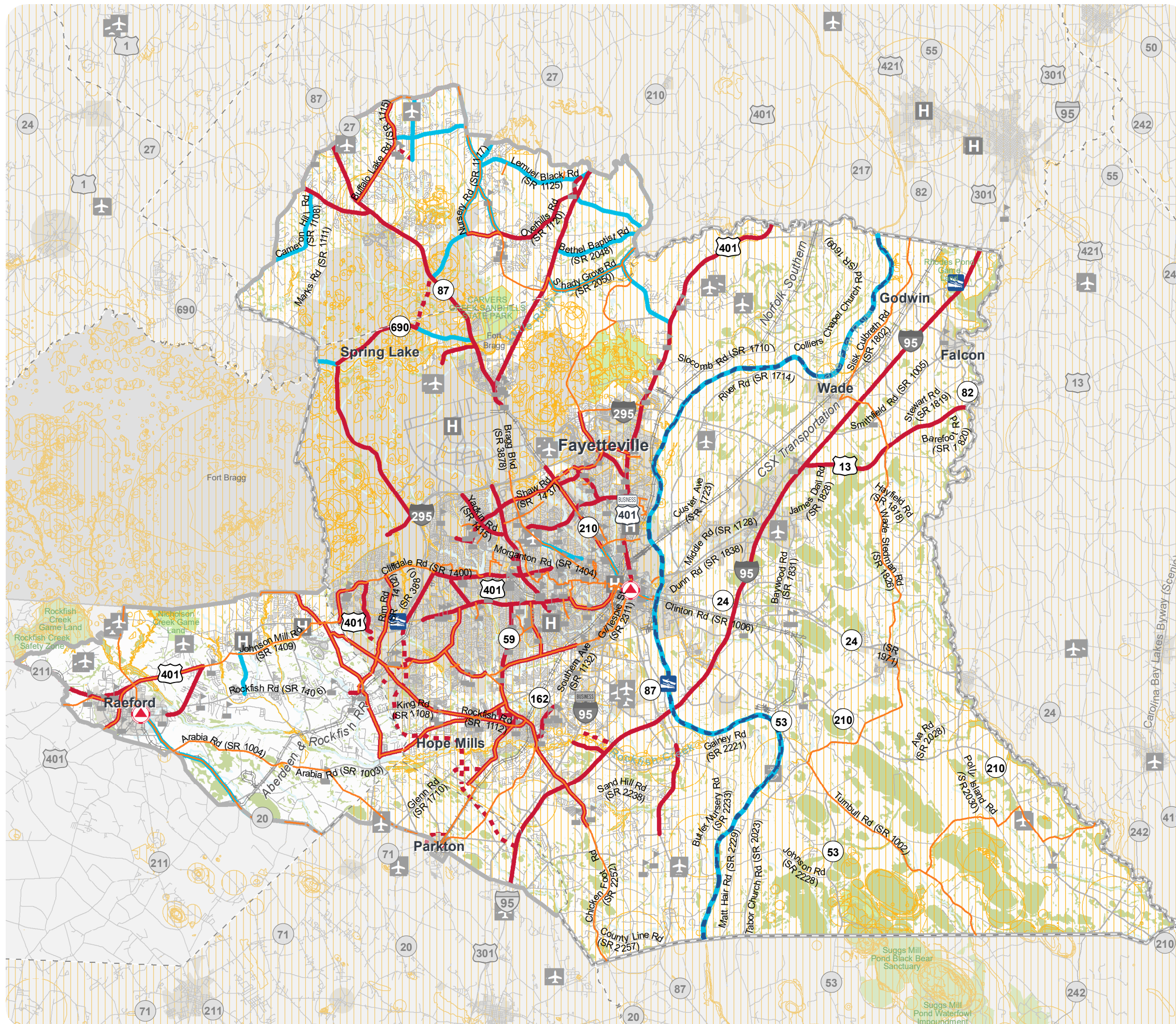
Figure 7
ENVIRONMENTAL FEATURES



FAMPO & CUMBERLAND COUNTY
 CTP Analysis and Information

Environmental Features Legend

-  Boating Access - Public
-  Emergency Operation Center
-  Anadromous Fish Spawning Areas
-  Bicycle Routes
-  Natural Heritage Element Occurrences



Full report at:
[Tinyurl.com/FAMPOCTP](https://tinyurl.com/FAMPOCTP)



Sheet 2.2 of 3

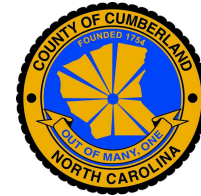
Base map date: November 07, 2019

Legal Disclaimer

This product contains mapping data for informational and planning purposes only, and is subject to change. Users should review or consult the primary data sources to ascertain the usability of the information.

DRAFT
 Plan Date: April 21, 2021

Figure 7
ENVIRONMENTAL FEATURES
 Additional Environmental Features



FAMPO & CUMBERLAND COUNTY
 CTP Analysis and Information
 Additional Environmental Features Legend

- Sanitary Sewer System - Discharges
- Sanitary Sewer System - Pump
- WaterPumps
- Sanitary Sewer System - Land Application Area
- Water Distribution System - Well
- Historic Resources - Local District Boundaries
- Historic Resources - Other Categories
- Geology
 TYPE
 Sedimentary Rocks



Full report at:
[Tinyurl.com/FAMPOCTP](https://tinyurl.com/FAMPOCTP)



Sheet 3 of 3

Base map date: November 07, 2019

Legal Disclaimer

This product contains mapping data for informational and planning purposes only, and is subject to change. Users should review or consult the primary data sources to ascertain the usability of the information.

DRAFT
 Plan Date: April 21, 2021

